

QEL M-Controller Series Digital / Analog Controller



The M-Controller is a multi-channel controller and alarm unit that utilizes both digital and analog communications to interface with a maximum of 32 remote digital QEL transmitter/sensors, and 8 analog transmitter/sensors. These are used to measure a wide variety of toxic gases such as CO, NO₂, NH₃, H₂S, SO₂, Refrigerants, Combustibles, and CO₂. The RS-485 communication is connected via a 4-wire multidrop configuration to reduce the overall installation costs of the system. Range and alarm setpoints are set through the front keypad or through QEL supplied software that is downloaded to the controller from a PC or laptop computer. With three standard on-board relays the controller can direct up to 12 remote relay modules, each of which may have up to eight relays for a total count of 99 relays, without compromising the sensor count. Common relay configurations include voting, averaging, delay on actuation and deactuation, normally/not-normally energized and latching. The audible alarm has three buzzer settings, continuous, intermittent and double-tap intermittent. An additional feature includes 24 VDC transistor outputs for a horn and strobe. An RS-422 responds as a RTU Slave using MODBUS protocol which allows the controller to provide read status information only. The RS-232 interface uses a RJ-11 telephone jack primarily used for uploading and downloading a large configuration database. Available is an analog output card that includes eight 4-20 mA analog outputs. Each analog output can be defined in complex fashions allowing the averaging of several input signals and the assignment of different values to both the 4 and 20 mA outputs. The M-Controller automatically linearizes the values between these two points. Each controller comes standard with a 2 x 16 character back-lit display with an adjustable scroll rate.

TRANSMITTER/SENSOR WIRING

The M-Controller provides four serial ports for digital communication with QEL transmitter/sensors and relay modules. A maximum of 32 inputs can be arranged in any configuration to these ports including all 32 on any one port. From any serial connection, four wires are connected to the farthest transmitter/sensor with multidrop installation to the remaining transmitter/sensors. Two of the wires provide 24 VDC power from the controller, the other two are used for the serial communication. This arrangement reduces the amount of wire, conduit and conduit size, providing for a significant installation cost reduction. Equally the M-Controller provides additional 8 channel analog inputs for any gas transmitter/sensor or other 4-20 mA input signals from any other type of transmitter/sensors. QEL Engineering can review a proposed system layout and provide recommendations to optimize cost reduction efforts.

MODEL NUMBER ORDERING CODE

M - C O N T R O L L E R X - [] []

Revision (Factory Provided) X

Options (Enter 0 for No Selection)

Analog Output Card..... T
(8 channels)

Nema 4X Enclosure N

M - R E L A Y - 5 X - [] []

Revision (Factory Provided) X

Option

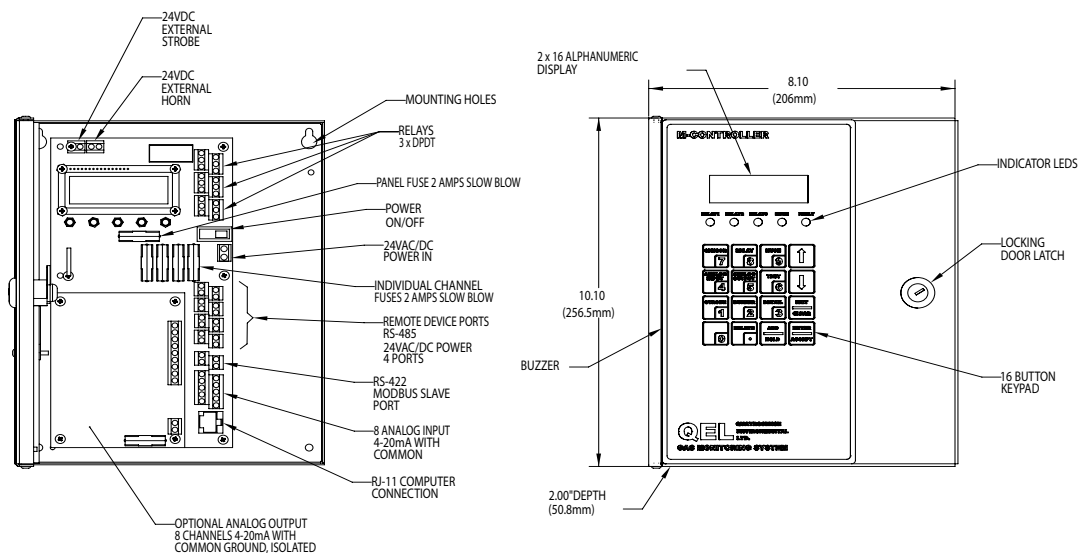
Number of Relays:..... 2, 4, 6, 8



QUATROSENSE
ENVIRONMENTAL
LIMITED

Tel: 613-838-4005
www.QELsafety.com

QEL M-Controller Series Digital / Analog Controller



ELECTRICAL AND MECHANICAL SPECIFICATIONS

Input Power: 24V +/- 4V AC or DC
Fuse: 2 Amp
Enclosure: NEMA 1 Type General Purpose
Enclosure Materials: Steel, epoxy painted black
Dimensions: 8" X 10" X 2" (203 X 254 X 51 mm)
Temperature: Industrial -20° to +50° C (-4° to +122° F)
Humidity: Continuous 15 to 90% RH, non-condensing
 Intermittent 0 to 99% RH, non-condensing
Input Types: 4 parallel RS-485 digital ports for up to 32 QEL transmitter/sensors, 99 Relays, 8 analog 4-20 mA inputs from any transmitter/sensors. RS-232 programming port using RJ-11 connector
Output Ports: RS-422 to host computer/PLC using Modbus Plus
 RS-232 programming port using RJ-11 connector
 Optional 8 analog 4-20 mA signals scalable
LED Status Lights: 5 Red,
 ▶ Relay 1
 ▶ Relay 2
 ▶ Relay 3
 ▶ Hush
 ▶ Fault

Recommended Cable: Power - Twisted shielded pair
 Communication (RS-485) – Belden 9841 or equivalent twisted shielded pair, 120 ohm
Panel Controls: 4 x 4 tactile and audible keypad
Audio Indicator: 90 db at 30 cm, 2700 Hz
 Buzzer 1: Continuous
 Buzzer 2: Double-tap Intermittent
 Buzzer 3: Intermittent 50% Duty Cycle
Relay Outputs: 3 DPDT rated 5 Amps resistive 3.7 Amps inductive at 240 VAC / 30 VDC
 Optional 96 DPDT 5 Amps relays 8 per card
Relay Assignment: Independent, individually set to one or all transmitter/sensors.
 Fail common to all transmitter inputs
Time Delays: Individually set, make, break, average, and voting, 0 to 60 minutes
LCD Digital Display: Two line 16 character back-lit LCD displaying transmitter address, gas type, concentration and alarm status
Display Scroll Rate: Adjustable 1 - 9 seconds
Power Supply Output: 24 V supplied externally through controller
System Test: Through front keypad
Approvals: CSA NRTL/C C22-205



Ensure a complete understanding of all applicable Federal, State, Provincial and Local Health and Safety laws and regulations before using these products.



QUATROSENSE
 ENVIRONMENTAL
 LIMITED

5935 Ottawa Street, Richmond, Ontario, Canada K0A 2Z0
 Phone: 1.613.838.4005 Fax: 1.613.838.4018
 Email: QEL@QELsafety.com www.QELsafety.com

This brochure includes general specifications which are subject to change.